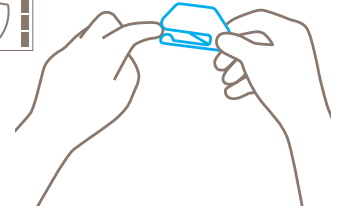


## TECHNICAL DATA SHEET

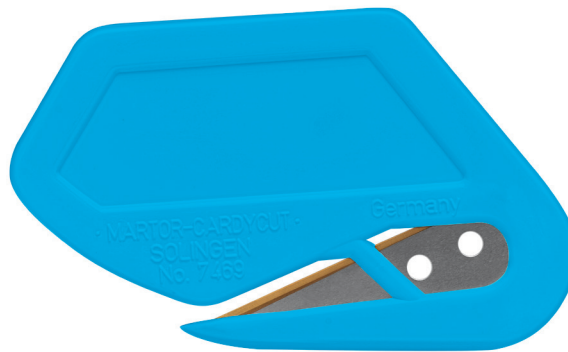
### SECUMAX CARDYCUT NO. 7469

#### Safety technology



#### **Concealed blade – a maximum degree of safety**

The SECUMAX CARDYCUT blade is not an open one, but is hidden from people and goods. This provides you with the highest degree of safety from cut injuries and from damage to goods.



SLENDER DISPOSABLE SAFETY KNIFE WITH CONCEALED BLADE, ESPECIALLY FOR CUTTING FOIL AND PAPER.

**Order No.** 7469.08

#### **Ventures where others won't. With stainless steel blade.**

Funnily enough, the SECUMAX CARDYCUT bears striking resemblance to the two materials it best likes to cut: thin paper and film. With a wall thickness of a miniscule 2 mm, this cutter is one of our most slender. It is also extremely flexible. You can reach places with the SECUMAX CARDYCUT that other cutters just won't dream of going. Tiny gaps, for example, and narrowest of spaces.

#### **Safety for all and for everything.**

The injected and concealed blade does not come close, either to you or to your goods. In other words, you only cut what you really want to cut.

#### **No blade change**

The SECUMAX CARDYCUT is a disposable cutter. Since you do not have to change the blade, you will also not come into contact with it. An excellent safety feature.

#### **Soft and flexible**

You can glide through and over film as if it were silk with the thin, bendable SECUMAX CARDY - even when cutting into curves. It gets going immediately here, because the blade starts right at the front.

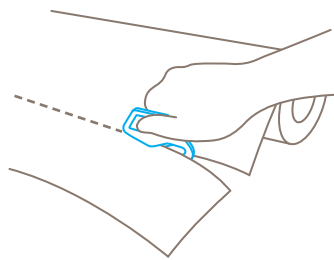
#### **Additional bar**

The SECUMAX CARDYCUT is very good at handling pressure from above. That's because handle and nose are connected by an additional bar, which creates more stability and safety.

#### **No rust**

Your cutting tool is fitted with a stainless steel quality blade. The TiN coating ensures that you can cut easily and more effectively for longer with your SECUMAX CARDYCUT.

USAGE




PRODUCT FEATURES

Technical features

	Maximum safety		Disposable knife		Ergonomic		Cutting depth
	For right and left hander		Non-corrosive		TiN-coated		Printable for promotional purposes

Main cutting materials

	Wrapping, stretch, and shrink foil		Tape		Layers of foil or paper		Yarn, cord
-----------------------------------------------------------------------------------	------------------------------------	-----------------------------------------------------------------------------------	------	-----------------------------------------------------------------------------------	-------------------------	-------------------------------------------------------------------------------------	------------

Installed blade

Blade thickness 0.30 mm

BLADE CHANGE

The TiN-coated stainless steel blade is moulded into the body of the cutter and cannot be changed. Blade thickness 0.30 mm.

SERVICES OFFERED

	Technical data sheet		Consulting service
-------------------------------------------------------------------------------------	----------------------	-------------------------------------------------------------------------------------	--------------------

PRODUCT AND PACKAGING DETAILS

Order No.	NO. 7469.08	Packaging unit (PU)	1 knife (loose)
Knife size (L x W x H)	70 x 2 x 43 mm	Weight (PU)	5.5 g
Weight knife	5.5 g	EAN Code (PU)	4002632910579
Basic material	Plastic	Quantity in outer pack	50 knives
Cutting depth	2.25 mm	Size outer pack	170 x 82 x 47 mm
		Weight outer pack	313.0 g
		EAN Code outer pack	4002632961892
		Customs tariff number	82149000

## SECURITY ADVICE

To ensure that you use your new MARTOR knife safely and most effectively, please read and note the following user-instructions. Please keep the written guide in a safe place so that you can access it at any time.

**1. Usage advice:** Please use the product carefully for described work only and not for any purposes other than those that are intended. Please take the correct handling and the proper use of the cutting tool into account in this regard.

**2. Special application Instructions to avoid the danger of injuries:** Only use cutting tools that are in perfect condition and have sharp, clean and undamaged blades. Employ the utmost care when handling the knives. CAUTION: The blade is sharp and can result in serious and deep cuts. Therefore, never reach into the blade! To reduce the danger of injuries, hold the hand that is being used to restrain and stabilise the

cutting base in such a manner that the restraining hand or even other body parts are not endangered in the event that the knife slips. Do not modify this product in any way. Modifications of any kind may impair product safety. CAUTION: The risk of injury caused by manipulation of this product is extremely high. When both cutting edges are no longer sharp, dispose of the knife as general waste.

**3. Non-use of the knife:** Store the knife in a secure place.

**4. Care instructions:** Always keep the knife clean and do not expose it to unnecessary humidity to safeguard a long service life.

**CAUTION: No liability will be assumed for consequential losses. Subject to technical changes and errors! This knife does not belong in the hands of children!**

## ACCESSORIES

**MATADOR**  
NO. 104000



Our small paper and film cutters are so handy they will delight you. But to further increase your cutting comfort, you can attach an ergonomically shaped additional handle. No tools are needed for attaching and detaching. The clasp function of the MATADOR is designed to perfectly fit your cutting tool. Stay safe, increase stability.

## MANUFACTURER

MARTOR KG | Lindgesfeld 28 | 42653 Solingen | Germany  
T +49 212 73870-0 | F +49 212 73870-90 | [info@martor.de](mailto:info@martor.de) | [www.martor.com](http://www.martor.com)